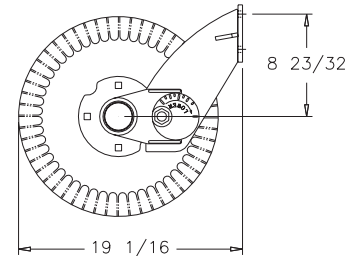
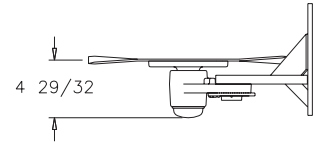


# HEAVY-DUTY UNIT MOUNT CONSERVATION COULTER



## Features

- Mounts on planter unit for conservation to no-till
- Fits John Deere, White 6100 and Kinze planters
- Available in right and left hand models
- Unique cam adjustment for depth control
- Heavy-Duty greasable hub
- Double-Lipped grease seal
- Tapered roller bearings



## Unit Mount Coulters (base unit)

Part No.	Description	Weight
204-123L	RH – Fits Great Plains (Except YP), John Deere Maximerge / Maximerge Plus	45 lbs.
204-128L	RH – Fits John Deere 7000, 7100, Kinze and White 6100	45 lbs.
204-129L	LH – Fits John Deere 7000, 7100, Kinze and White 6100	45 lbs.
204-130L	LH – Fits Great Plains (Except YP), John Deere Maximerge / Maximerge Plus	45 lbs.

**Note:** Price of blades and spring packages are not included in base unit. Order one of each to complete coulters.

## Coulters Blades

Part No.	Description	Weight
820-018C	Narrow Fluted Blade – 17"	9 lbs.
820-082C	3/4" 12 Wave Blade – 17"	12 lbs.
820-156C	5/8" Turbo Coulters Blade (Patented) – 17"	12 lbs.
820-205C	5/8" Turbo Coulters Blade (Patented) – 16"	11 lbs.
820-326C	Coulters Blade (Fluted) – 16"	8 lbs.
820-327C	Coulters Blade (Turbo) – 15"	11 lbs.
820-331C	Coulters Blade (Fluted) – 15"	7 lbs.



Turbo Coulters



3/4" x 17"  
12 Flutes



5/8" x 17"  
24 Flutes



5/16" x 17"  
50 Flutes

## Spring Package

Part No.	Description	Weight
204-006K*	Spring Package – Fits John Deere 7000, 7100 and Kinze	30 lbs.
204-113K	Spring Package – Fits John Deere 7200, 7300	30 lbs.

**\*Note:** Spring package adds up to 300 pounds of additional down pressure and is required in most no-till conditions.

