

350 BUSHEL AIR CART

from



ADC2350B



ADC2350

The ADC2350 and ADC2350B were designed for farmers looking for the highest combination of productivity and accuracy in an air delivery cart. The 350 bushel cart can be ordered in a pull-between or a pull-behind configuration. The pull-between model (ADC2350) is used on the CTA4000, CTA400HD, NTA3010 and NTA3510 and features a semi-mounted cart-to-im-

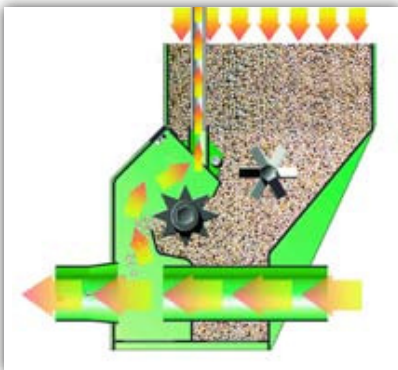
plement design. This design allows the implement to “float” behind the air cart and shortens the overall length on the air drill by up to 15’ (4.5m).

The pull-behind version (ADC2350B) is used on the 3N-4010HDA and incorporates a high flotation set of tricycle caster wheels that allow sharp end row turning.

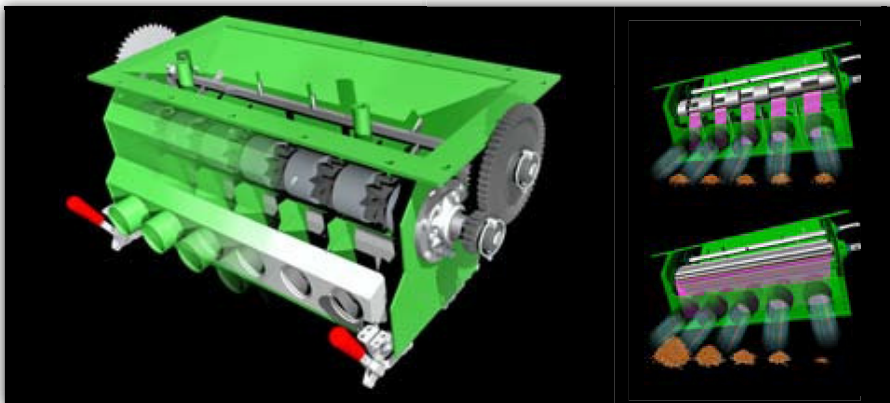
MODELS

ADC2350
ADC2350B

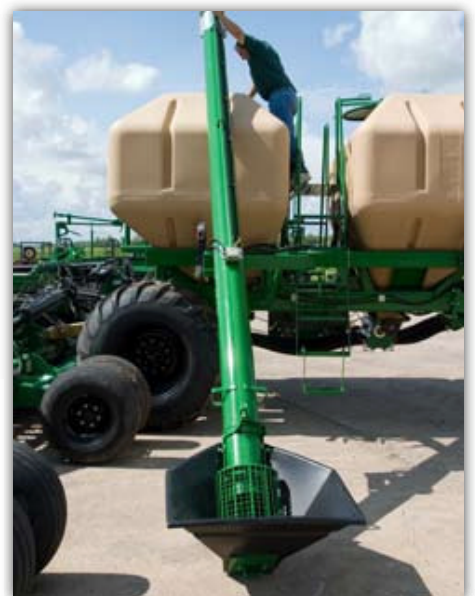
PRESSURIZED AND COMPARTMENTALIZED METERS



Air velocity can adversely effect seed flow on non-pressurized systems. Great Plains’ air carts overcome this by pressurizing the tanks, which allows seed to flow normally through the meters and into the air flow without blow back. Compartmentalized metering (below) means consistent seeding to each compartment, eliminating cross-feeding and increasing planting consistency.



LOAD/UNLOAD AUGER



Dual purpose design allows you to load and unload with the same auger. It stores conveniently on the side of the cart and is counterbalanced to allow easy handling.

