



# 50 SERIES HARVEST COMMANDER™ GRAIN AUGER WAGONS



## 850 & 1050 HARVEST COMMANDER™ WAGONS

Designed for today's high-yielding crops and the professionals who harvest them.

2.1 (1050) and 2.3 (850) minute  
average unloading times

### 1050 ROW CROP (38" tires)

Standard, vertical  
auger-mounted  
auxiliary work light

Improved efficiency

Lower horsepower  
required per bushel

### Low-Profile Design

The KINZE® Harvest Commander™ combines KINZE's classic, signature low-profile design with unmatched strength and stability. Simply stated, the Harvest Commander™ is structurally superior to anything else in the field. And, now you have even greater unloading height, auger reach and grain-handling capacity.

### Check the details

No joints or "ledges" inside the grain tank. All side and rear sloping joints are formed on the outside, resulting in unrestricted grain flow. The outside joints also create a drip-edge which helps prevent moisture from "wicking" into grain in the tank. And, KINZE is the only wagon manufacturer using powder-coat paint for a longer lasting, superior finish.



### Built-in clean-out tool

A "clean-out sweep," formed to fit the 3/4" gap under the horizontal auger, is used to help remove any grain remaining under the auger. Two push rods are assembled to form the sweep handle and are used to shuttle the "sweep" fore and aft in the rounded, formed bottom of the grain tank. The 10-foot-long push rods conveniently store in a tube under the grain tank.



# THE NEXT LEVEL IN GRAIN HANDLING

## On-Demand Positive Drive System

### 850 and 1050 bushel capacities

Bushel capacities stated are level-full, not heaped. Wheel wells in 1050 ROW CROP and 1050 SOF-TRED models reduce capacities less than 10 bushels.



Less maintenance and superior clean-out

Unmatched strength and stability

850 SOF-TRED

### • NO CHAINS ... NO SPROCKETS ... FOR REDUCED DAILY MAINTENANCE!



Unique "On-Demand" positive drive gives you natural, unrestricted grain flow with much greater efficiency and better horsepower utilization. KINZE® HARVEST COMMANDER™ Grain Auger Wagons require no chains or sprockets — resulting in fewer wear parts and less daily maintenance.

The vertical auger is direct-driven through a cast iron, 90° gearbox with forged bevel gears. Precision-cut spur gears are sized to create a 2 to 1 drive ratio. The heavy-duty 1050 gearbox is sized to handle the higher loads of the larger auger system.

A drive sheave is mounted to the input shaft of the gearbox and powers the horizontal auger with a matched pair of multi-strand V-belts\*. Sheave sizing results in a 2 to 1 drive reduction on both model wagons. A spring-loaded idler tensions the belt drive and a small hydraulic cylinder is used to engage/disengage the horizontal auger. This ability to disengage the horizontal auger drive allows clean-out of the vertical auger prior to folding.



You have a choice of 1 3/8"-21 or 1 1/4"-20 spline PTO shafts\*\* with a 4-lobe overrunning clutch on the 850. The 1 1/4"-20 spline PTO shafts\*\* on the 1050 come with 4-lobe overrunning and torque limiting clutches. (The overrunning clutch systems on both models are designed to allow the auger systems to freewheel and protect the tractor and wagon against the possibility of shock damage from PTO brake-equipped tractors.)

\* 1050 uses 8-groove sheaves with two 4-band, multi-strand V-belts; 850 (shown) uses 6-groove sheaves and two 3-band multi-strand V-belts. Both models use 7/8" diameter drive sheaves/15" diameter driven sheaves to create a 2 to 1 ratio.

\*\* 850 PTO shafts: 1000 rpm, 150 HP rated; 1050 PTO shafts: 1000 rpm, 220 HP rated.

### • GIANT VERTICAL UNLOADING AUGERS!

Unloading speeds? CHECK 'EM OUT!

Over 500 bushels per minute on the 1050 ... up to 375 on the 850! Average unloading times of 2.1 and 2.3 minutes, respectively. Nobody moves grain like KINZE and, here's why:

**1050 model** features 20" flighting (22" O.D. tube) with full tilt design flighting for increased efficiency. The vertical auger is constructed with an 8" diameter center tube and full pitch L.H. flighting. Edge thickness is 7/16".

**The 850** is built with an 18" diameter vertical unloading auger (20" O.D. tube) with 8" center tube and 18" full pitch L.H. full tilt flighting. Edge thickness is 3/8".

The oversized diameter of the auger's center tube allows the carrier bearing to mount WITHIN the diameter of the center tube — significantly reducing grain restriction which can lead to flighting and tube wear. The vertical augers on both model wagons are easily removed for inspection or replacement. Tube replacement is also simplified due to the unique bolted tube and flange design.



### • ONE-PIECE, FULL-LENGTH HORIZONTAL AUGERS



One-piece design eliminates the need for a center carrier bearing and minimizes the possibility of grain restriction. It also makes it easier to remove for service ... through an opening (covered by a bolt-on plate) at the rear.

Full pitch L.H. flighting is used on the front half and 3/8 pitch L.H. flighting is used on the rear half of the auger assembly. This ensures even, consistent front-to-rear unloading and helps minimize hitch loads. Cast iron hubs with tapered bearings support the auger at the front and rear. Drive lugs on the hub spindles and mating holes in the auger center tubes make replacement of augers simple. (No frozen shafts or broken cross-bolts.) A similar drive lug design is used on the vertical augers.

**1050** — the 17" diameter horizontal auger flighting is formed with an edge thickness of 3/8" and mounted to an 8" center tube.

**850** — the 15" diameter horizontal auger flighting is formed with an edge thickness of 3/8" and mounted to a 7" center tube.



**MAXIMUM PAYLOADS.  
TIRE OR TRACK SYSTEMS.  
CLASSIC LOW-PROFILE DESIGN.**



## CHOOSE YOUR TRANSPORT SYSTEM:



### 850 WHEEL

30.5" x 32" 16-ply tires. Choose R-3 diamond-tread flotation (shown) or R-1 lug-type designs. An adjustable axle gives you 108" or 120" center-to-center tire settings. Available with electronic scale package option with a traditional three-point weigh beam system, including two weigh spindles and one hitch weigh beam.



### 1050 ROW CROP

Patented unequal-length parallel link axles maintain 30" or wide row wheel spacings at the point of ground contact. Choose 520/85R38 (20.8" x 38") or 480/80R42 (18.4" x 42") radial R-1 tires. Unique axle mounting lets you set spacings from 30" to 40" rows. Reversible rims provide narrow or wide spacing between the tires. The wheel wells handle both narrow and wide spacings and accommodate the up-and-down movement of the tires.



### 850 SOF-TRED

Super flotation! 1050/50R25\* (172B load index/speed category ratings) R-1 lug-type flotation tires. Multi-piece rims; 10-bolt cast-iron hubs; 3¾" high-strength alloy spindles. 108" center-to-center tire spacing. Electronic scale package option employs same three-point weigh beam system as the 850 WHEEL model.

\*66" x 43" x 25"



### 1050 SOF-TRED

Huge 1250/45-32 (76" x 50" x 32") 16-ply flotation tires on rugged 44" x 32" one-piece, drop-center rims. Formed wheel wells (same as those on the 1050 ROW CROP) are located in the center section of the lower grain tub. This allows wheels to be set on 96" centers, reducing transport width to just 12' 2". High-capacity ductile iron 10-bolt hubs; 4½" high-strength alloy spindles.



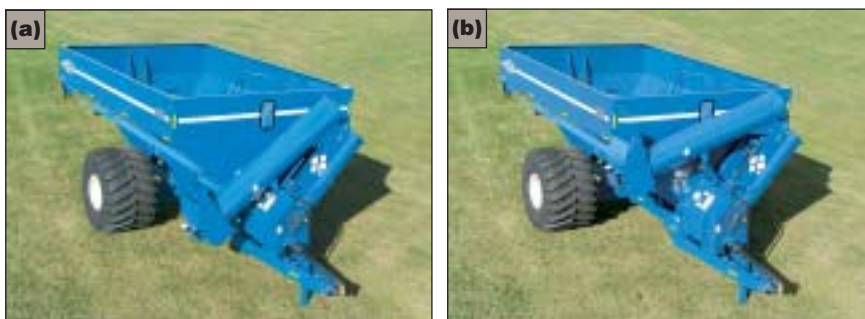
# THE NEXT LEVEL IN GRAIN HANDLING

## EXCLUSIVE VERTICAL AUGER FOLDING SYSTEM



### 1050 SOF-TRED

Improved unloading height and auger reach.  
1050 SOF-TRED grain discharge height is 13' 7".  
Outside of tire to tip of auger spout measures 6' 8".



Two folded positions. A fully folded SHIPPING/TRANSPORT position (a) allows the auger to fold within the outer dimension of the grain tub for transport widths of approximately 12 feet. The FIELD FOLDED position (b) folds the auger slightly lower than horizontal, yet above the point where tractor duals might interfere when making sharp turns. A stand supports the vertical auger in the FIELD FOLDED position. And now, you have more reach and unloading height than ever before. Grain discharge heights on both the 850 and the 1050 are 13' 6" - 13' 7", depending on tire/track options.



A 4 3/4" x 20" industrial-quality hydraulic cylinder, with remote-mounted counter balance valve, "locks" the auger in position for unloading. The self-aligning top section of the auger uses a spring-loaded upper bearing design — pioneered by KINZE — allowing the upper vertical auger to "ride up" and self-align with the drive coupler. The vertical auger is designed with heavy-duty 7-gauge replaceable upper and lower tube sections. Welded flanges on the upper and lower tubes allow them to be bolted to the upper discharge spout and lower mounting housing, respectively.

## ELECTRONIC SCALE PACKAGE OPTIONS

**1050** — Rugged, 3-point scale system (factory or dealer-installed) is used on all 1050 models. Features two 50,000-lb. rated compression-type (CT) load cells at the rear of the axle assembly and a 3 3/4" hitch weigh beam. The package includes a Digi-Star® EZ 2000 printer-ready console, heavy-duty cables and a water-resistant junction box.

**850** — This traditional 3-point weigh beam system includes two 3 3/4" (high-strength) weigh spindles, one 3 3/4" hitch weigh beam with mounting components, junction box, cables and Digi-Star® EZ 2000 printer-ready console. (Scale package not available for 850 SOF-TRAK.)

Single clevis hitches are included with all scale packages. Wiring is protected in a full-length tube under the grain tank. Options to capture weight information include a Dot Matrix Roll Printer or a Data Down Loader Kit for transferring load data to computers with Windows 98/2000 operating systems.



### 850 or 1050 SOF-TRAK

The ultimate flotation system. Select 24" or 36" tracks. Improved track undercarriage is redesigned for superior reliability. Cast iron-segmented

end wheel design greatly reduces daily inspection and maintenance as opposed to higher-maintenance rubber-tire end wheel configurations. The 16" diameter mid wheels are constructed from spun-formed 3/8" steel and feature extra-large diameter tapered bearings. Adjustable axle widths allow you to center tracks on 108" or 120".

## ELECTRONIC SCALE COMPONENTS

	850 WHEEL/SOF-TRED*	1050 (ALL MODELS)
SCALE CONSOLE	Digi-Star® EZ 2000	Digi-Star® EZ 2000
HITCH WEIGH BEAM	3 3/4"	3 3/4"
AXLE WEIGH BEAM	3 3/4" Spindle (2)	CT Load Cell - 50,000-lb. Rated (2)
PRINTER	Optional - Dot Matrix	Optional - Dot Matrix
DATA DOWN LOADER KIT	Optional	Optional

\* Electronic scale package not available for 850 SOF-TRAK models.

## HIGHER STANDARDS: START TO FINISH

From precision laser-cut components to the powder-coat finish, 850 and 1050 Harvest Commander™ Grain Auger Wagon production involves the most modern methods and technologies.



All sheet metal components are laser cut from 12-gauge steel and precision-folded to ensure exact fit when assembling the various panels. Weld fixturing allows position welding of all joints. Robotic welders are used on some frame sub-weldments and critical overlay joints.



**850 AUGER WAGON**  
(30.5" x 32" R-1 tires)



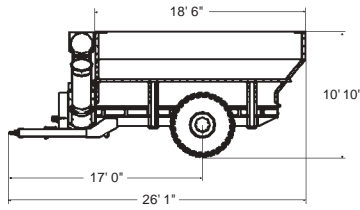
## KINZE® POWDER-COAT PAINT

gives you a long-lasting superior finish as opposed to wagons painted with traditional liquid paint. The KINZE® powder-coat paint system is one of the largest in the world! Components (up to 6' W x 8' 6" H x 35' L) travel the conveyor line through wash, powder application and cure oven systems. This includes the 1050 wagon frame which is nearly 30 ft. in length and weighs approximately 3500 lbs. All other parts bolt to the frame, allowing 100% powder-coat painting of the frame, axle options, auger componentry and sheet metal. This bolt-together design ensures that all surfaces are painted to minimize rust bleed. (Bearings, gearboxes and other parts, not designed to withstand 350°-400° oven temperatures, are liquid painted.)

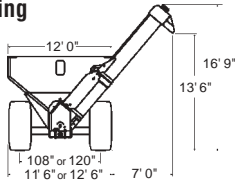
# THE NEXT LEVEL IN GRAIN HANDLING

## OPERATING/TRANSPORT DIMENSIONS

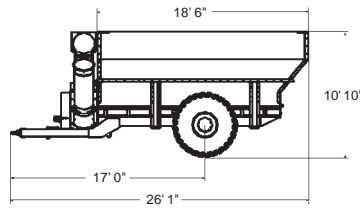
### 850 WHEEL Field Folded



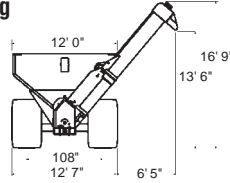
### Unloading



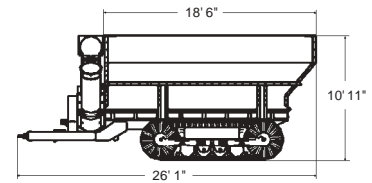
### 850 SOF-TRED Field Folded



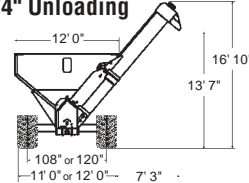
### Unloading



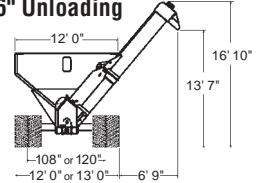
### 850 SOF-TRAK 24" or 36" Field Folded



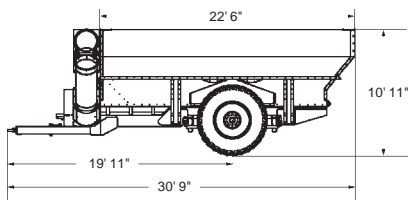
### 24" Unloading



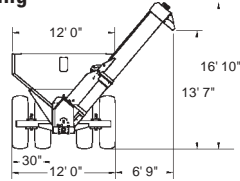
### 36" Unloading



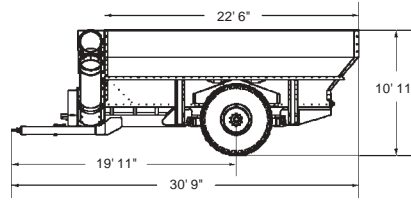
### 1050 ROW CROP Field Folded



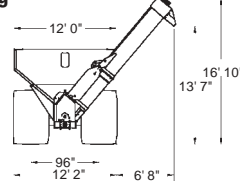
### Unloading



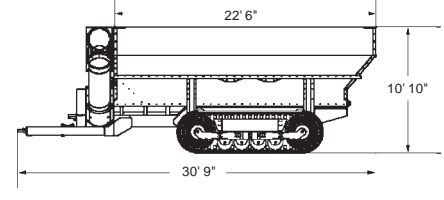
### 1050 SOF-TRED Field Folded



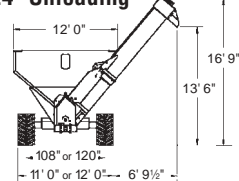
### Unloading



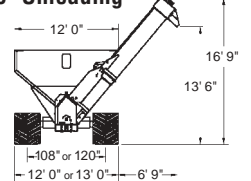
### 1050 SOF-TRAK 24" or 36" Field Folded



### 24" Unloading



### 36" Unloading



## DIMENSIONS / WEIGHTS

	850 WHEEL	850 SOF-TRED	850 SOF-TRAK	1050 ROW CROP	1050 SOF-TRED	1050 SOF-TRAK
<b>TIRE/TRACK CENTER-TO-CENTER</b>	108" or 120"	108"	108" or 120"	30" to 40" Rows*	96"	108" or 120"
<b>TRANSPORT WIDTH</b>						
— Narrow Setting	12' 0"	12' 7"	12' 0"	—	12' 2"	12' 0"
— Wide Setting	12' 6"	Not Recommended	12' 0" (24") 13' 0" (36")	—	Not Recommended	12' 0" (24") 13' 0" (36")
— 30" Row	—	—	—	12' 0"	—	—
— Wide Row**	—	—	—	15' 2"	—	—
<b>WIDTH, Grain Tank</b>	12' 0"	12' 0"	12' 0"	12' 0"	12' 0"	12' 0"
<b>LENGTH, Grain Tank</b>	18' 6"	18' 6"	18' 6"	22' 6"	22' 6"	22' 6"
<b>HEIGHT, Grain Tank</b>	10' 10"	10' 10"	10' 11"	10' 11"	10' 11"	10' 10"
<b>LENGTH, Total</b>	26' 1"	26' 1"	26' 1"	30' 9"	30' 9"	30' 9"
<b>HEIGHT, Grain Discharge</b>	13' 6"	13' 6"	13' 7"	13' 7"	13' 7"	13' 6"
<b>WEIGHT, Empty</b>	13,066 lbs.	13,970 lbs.	20,977 lbs. (24") 21,887 lbs. (36")	19,721 lbs. (38" tires) 19,658 lbs. (42" tires)	18,441 lbs.	22,971 lbs. (24") 24,081 lbs. (36")
<b>HITCH WEIGHT, Empty</b>	3380 lbs.	3380 lbs.	3380 lbs.	3420 lbs.	3420 lbs.	3420 lbs.
<b>HITCH WEIGHT, Loaded</b>	4800 lbs.	4800 lbs.	4800 lbs.	5140 lbs.	5140 lbs.	5140 lbs.

\* 1050 ROW CROP wheel spacing is infinitely adjustable from 30" to 40" row spacings.

\*\* Transport width for 1050 ROW CROP with 520/85R38 (20.8" x 38") axle/wheel spacing set for 40" rows. Transport width is 15' 0" with 480/80R42 (18.4" x 42") tires on 40" row setting.

#### 850/1050 OPTIONS:

**Hydraulic Flow Gate Package (Dealer-Installed):** Includes flow gates, operating mechanism and linkage, mounting brackets and hardware, 2" x 8" externally mounted hydraulic cylinder, hoses and fittings. Recommended only for crops that do not flow easily, such as rice. Not intended as a constant-use shut-off device.

**Electronic Scale Packages:** 1050 - Electronic scale options include (2) CT load cells, 3/4" hitch weigh beam, junction box, cables and EZ 2000 printer-ready electronic scale console. 850 - Electronic scale options include (2) 3/4" weigh spindles, 3/4" hitch weigh beam, junction box, cables and EZ 2000 printer-ready electronic scale console. (Not available for 850 SOF-TRAK models.) All electronic scale models are equipped with single clevis hitch. Scale componentry is used in lieu of standard hitch clevis.

**Dot Matrix Roll Printer:** Includes printer and required cables. Will print out individual load information, including load identification number, time, date and weight.

**Data Down Loader Kit:** Includes data utility software to run computer with Windows 98/2000 operating systems, computer interface cable, data down loader module and module cable. Module will store up to 1600 lines (64 bytes) of load data including load ID number, time, date and weight.

**Transport Safety Chain Package, 1/2":** Includes two 40,500-lb. rated certified auxiliary chains with mounting hardware.

# SPECIFICATIONS

	850 WHEEL	850 SOF-TRED	850 SOF-TRAK	1050 ROW CROP	1050 SOF-TRED	1050 SOF-TRAK
<b>TOTAL CAPACITY*</b>	850 Bushels	850 Bushels	850 Bushels	1050 Bushels	1050 Bushels	1050 Bushels
<b>BU/MIN — AVERAGE*</b>	375	375	375	500	500	500
<b>VERTICAL AUGER</b>	18" Full Tilt Full Pitch L.H.	18" Full Tilt Full Pitch L.H.	18" Full Tilt Full Pitch L.H.	20" Full Tilt Full Pitch L.H.	20" Full Tilt Full Pitch L.H.	20" Full Tilt Full Pitch L.H.
<b>FLIGHTING — Thickness</b>	3/8"	3/8"	3/8"	7/16"	7/16"	7/16"
<b>TUBE — Vertical Auger</b>	20" O.D. - 7 ga.	20" O.D. - 7 ga.	20" O.D. - 7 ga.	22" O.D. - 7 ga.	22" O.D. - 7 ga.	22" O.D. - 7 ga.
<b>BEARINGS — Vertical Auger</b>	2"	2"	2"	2"	2"	2"
<b>HORIZ. AUGER — Front</b>	15" Full Pitch L.H.	15" Full Pitch L.H.	15" Full Pitch L.H.	17" Full Pitch L.H.	17" Full Pitch L.H.	17" Full Pitch L.H.
<b>HORIZ. AUGER — Rear</b>	15" 2/3 Pitch L.H.	15" 2/3 Pitch L.H.	15" 2/3 Pitch L.H.	17" 2/3 Pitch L.H.	17" 2/3 Pitch L.H.	17" 2/3 Pitch L.H.
<b>HORIZ. AUGER — Length</b>	17' 8"	17' 8"	17' 8"	21' 11"	21' 11"	21' 11"
<b>FLIGHTING — Thickness</b>	3/8"	3/8"	3/8"	3/8"	3/8"	3/8"
<b>BEARINGS — Horiz. Auger</b>	(2) 6-bolt Cast Iron Hubs w/Tapered Roller Bearings			- 6-bolt (Rear) and 8-bolt (Front) Cast Iron Hubs w/Tapered Roller Bearings -		
<b>GEARBOX</b>	Cast Iron - 90°/Cut Gears - 2:1 Ratio			HD Cast Iron - 90°/Cut Gears - 2:1 Ratio		
<b>DRIVE BELTS</b>	Two 3-band, Multi-strand V-belts			Two 4-band, Multi-strand V-belts		
<b>DRIVE SHEAVES</b>	6 Groove - 7 1/2" Drive/15" Driven			8 Groove - 7 1/2" Drive/15" Driven		
<b>PTO — 1000 RPM</b>	- 150 HP Rated with 4-Lobe Overrunning Clutch/U-joint with 12 mm Shear Bolt-			- 220 HP Rated with 4-Lobe Overrunning and Torque Limiting Clutches -		
<b>PTO YOKE</b>	Specify choice of 1 3/8" - 21 Spline or 1 1/4" - 20 Spline			1 1/4" - 20 Spline		
<b>FLOW GATE</b>	Optional	Optional	Optional	Optional	Optional	Optional
<b>SPLINDLES</b>	3 3/4" - High Strength (2)	3 3/4" - High Strength (2)	—	4 1/2" (4)	4 1/2" - High Strength (2)	—
<b>HUBS</b>	10 Bolt	10 Bolt	—	10 Bolt	10 Bolt - High Strength	—
<b>TIRES — Standard</b>	(2) 30.5" x 32" 16-Ply R-1 or R-3	(2) 1050/50R25 172B LI R-1 (66" x 43" x 25")	—	(4) 520/85R38 R-1 (20.8" x 38") or (4) 480/80R42 R-1 (18.4" x 42")	(2) 1250/45-32 16 Ply R-1 Bias (76" x 50" x 32")	—
<b>TRACK</b>						
— Width	—	—	24" or 36"	—	—	24" or 36"
— Length (Overall)	—	—	153"	—	—	153"
— Length (Contact)	—	—	108"	—	—	108"
— End Wheels (Per Track)	—	—	Cast Iron - Segmented (2) 36 1/2" Diameter	—	—	Cast Iron - Segmented (2) 36 1/2" Diameter
— Mid Wheels (Per Track)	—	—	16" Steel (4)	—	—	16" Steel (4)
<b>HITCH CLEVIS</b>	Specify choice of bolt-on single clevis, double clevis or single clevis swivel hitches. (All models except electronic scale equipped-machines.)					

\* Approximate with 15% moisture corn. Capacity & bu/min vary with moisture content of grain and/or PTO rpm. Wheel wells in 1050 ROW CROP and SOF-TRED models reduce capacities less than 10 bushels.

NOTE: All 50 Series Grain Auger Wagons include front and rear windows, grain tank safety grates, safety/warning lights, vertical auger-mounted auxiliary light, SMV sign, parking jack and all hydraulic hoses with ISO couplers (4).

## SAFETY/CONVENIENCE FEATURES:

- Large front and rear windows make it easier to monitor grain levels and provide a limited view through the rear of the wagon.
- ASAE/ANSI compliant safety/warning lights and reflective decals are included on all 50 Series wagons.



- Transport Safety Chain Package option includes two 40,500-lb. rated and certified 1/2" auxiliary safety chains with mounting hardware.

- Full, reinforced safety grating over lower section of tank minimizes risk of suffocation or entanglement.



- Hydraulic Flow Gate Package options are designed specifically for use with certain types of grain that do not flow easily (i.e., rice). The flow gate is used to control the volume of grain to the horizontal auger and is not intended to be a constant-use shut-off device. The dealer-installed package includes an externally mounted 2" x 8" hydraulic cylinder.

- 10,000-lb. rated jacks are center-mounted between the forward hitch frame and below the PTO. For better ground clearance and protection, the jack handle is used to pivot the jack between the vertical use position and horizontal storage position. A single-speed jack is used on 850 and a 2-speed jack is used on 1050 models.



# KINZE®

KINZE Manufacturing, Inc.  
I-80 at Exit 216  
Williamsburg, Iowa 52361-0806 USA  
www.kinzemfg.com

KINZE Manufacturing, Inc., reserves the right to make changes in engineering, design and specifications, or add improvements at any time without notice or obligation.

For more information on KINZE® Products, contact your authorized KINZE® Dealer:



Some photos show safety covers or shields removed for visual clarity. Never operate machines without all safety covers/shields in place. Some photos picture prototype machines. Production machines may vary in appearance.

KINZE®, the KINZE logo and Harvest Commander® are trademarks of KINZE Manufacturing, Inc.

The mark Digi-Star® is owned by Digi-Star.

