

# PowerBox™ 450 Diesel

Welder • Generator • Compressor unit

Unleash the power with a **PowerBox™ 450 Diesel** welder - generator - compressor unit.

The **PowerBox™ 450 Diesel** is a rugged and reliable workhorse, thanks to a 34 hp Kubota® engine, which has been engineered to easily bolt into standard fleetside pickup trucks, service bodies and flatbed vehicles. Sized for heavy duty applications, all **PowerBox™ 450 Diesel** units are designed to meet the commercial and industrial power requirements for:

- Large Construction/Excavating/Maintenance
- Commercial Fleet Service and Repair
- Mining and Logging
- Agriculture and Farming
- Municipalities and Public Works
- Government and Military
- And many additional applications

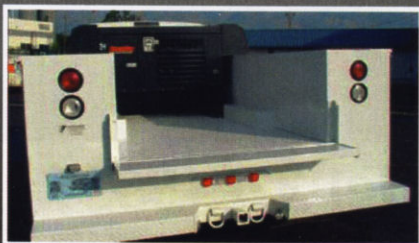
The **PowerBox™ 450 Diesel** unit is completely self-driven and weather resistant and delivers:

- 350 Amps of welding
- 30 or 65 CFM of air @ 100 PSI
- 12,800 watts of electrical power
- Optional 800 Amp 12/24 volt battery jumper/booster



**POWERBOX™**  
UNIVERSAL PORTABLE POWER SOURCE

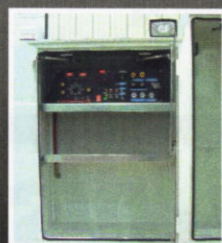
## Applications:



Drop-In Service Bodies



Integrated Service Bodies



Drop-In Pickup Trucks

# PowerBox™ 450 Diesel Specifications

## Typical Applications:

The **PowerBox™ 450 Diesel** is ideal for the professional that requires the ability to:

- Run power tools (i.e., saws, drills, grinders, lights, sanders, etc.)
- Run air tools (i.e., impact wrenches, ratchets, grinders, nailers, etc.)
  - 30 CFM (up to 1 inch impact wrench)
  - 65 CFM (air/arc gouging, use of multiple air tools simultaneously, etc.)
- Perform heavy duty welding repair and fabrication
- Perform operations with diesel fuel
- Jump start vehicles/equipment (w/optional booster)

## Engine:

- 34 hp Kubota® (4-cylinder) diesel, water-cooled

## Welding Capacity:

- Integrated 350 Amp (@ 100% duty cycle) DC welder

## Output Range:

- DC-CC = 30 - 350 Amps
- DC-CV = 15 - 30 volts

## Maximum Available Power:

- (60 Hz) 15 KVA alternator
- Maximum Output 12,800 watts
- 115v AC - Single Phase 12,800 watts (30 Amp)
- 230v AC - Single Phase 12,800 watts (30 Amp)
- 230v AC - Three Phase 12,800 watts (30 Amp)
- Auxiliary power (welding) 1,000 - 12,800 watts

## Electrical Outlets:

- 230v Three Phase (20 Amp)
- 230v Single Phase (20 Amp)
- Two (2) 110v (20 Amp) GFCI duplex receptacles

## Air Compressor:

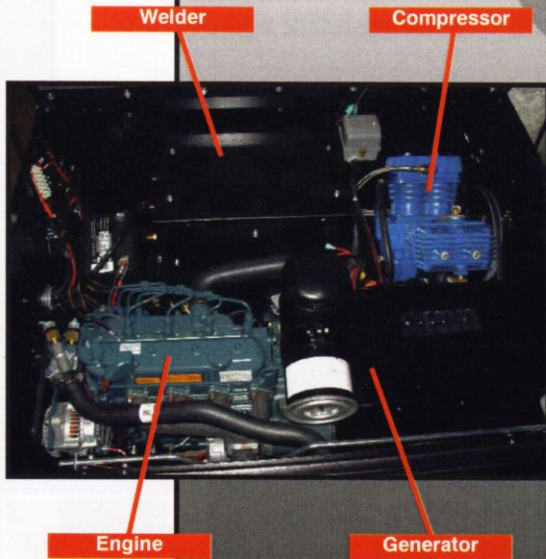
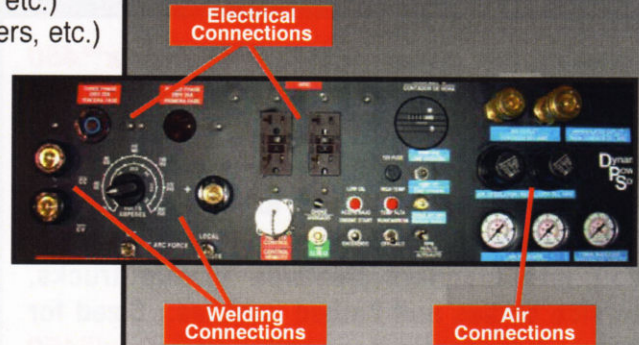
- 1 pump 30 or 65 CFM (Rotary Screw) @ 100 PSI
- Maximum 150 PSI available
- 10 gallon air storage tank
- One (1) 1/4" regulated outlet
- One (1) 3/8" regulated outlet
- One (1) 3/8" non-regulated outlet

## Dimensions:

- Height: 29"
- Width: 36"
- Length: 48"

## Weight:

- 1650 lbs.



Distributed by:



**(819) 379-8551**

Give us a call to know the dealer nearest you.

4225, SAINT-JOSEPH, TROIS-RIVIÈRES, QC