

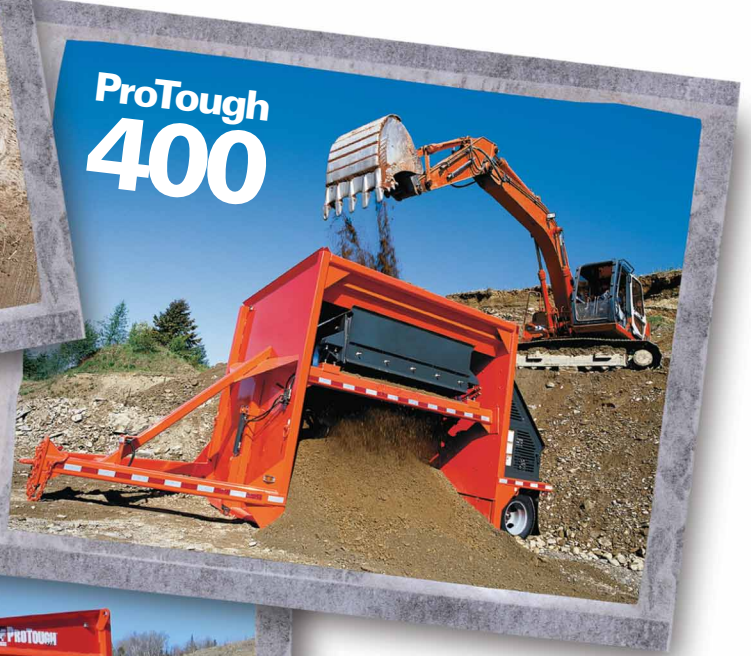
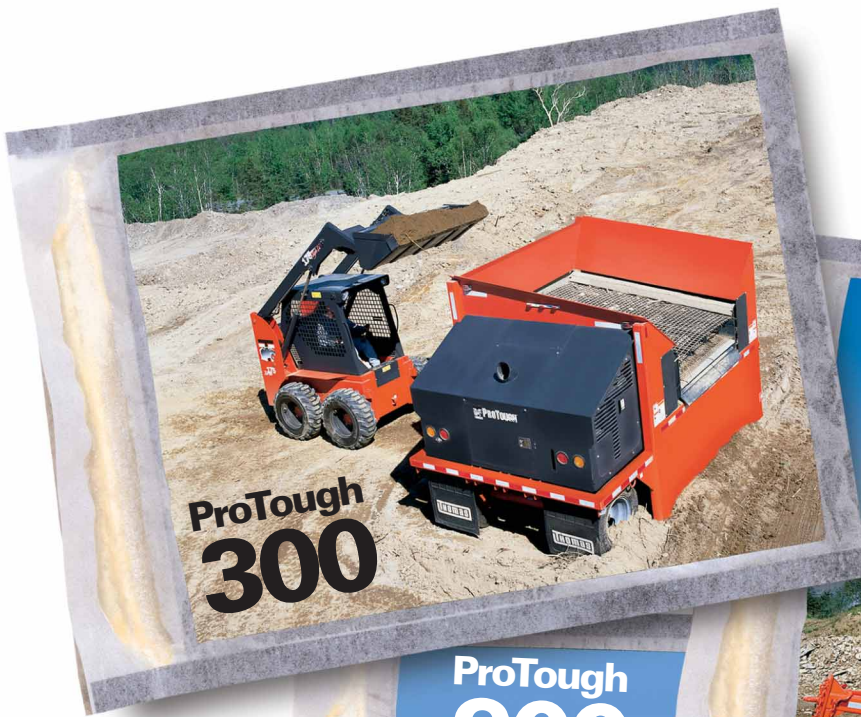
PROTOUGH MODEL : 300 400 900 900CE



Nothing gets by a Thomas Portable Material Handler

Thomas ProTough Portable Material Handlers are built to save you time and make you money by quickly and efficiently screening material, right on the job site. There are three tough versions – the ProTough Model 300, Model 400 and Model 900. Each of the models offers a wide variety of wire cloth screen options so you can screen topsoil, sand, loam, gravel, road base, drainage rock, mulch, and more with ease.





Quickly turn raw material into hard cash

Put a Thomas Portable Material Handler on your job site and you'll be able to screen out mountains of recyclable material quickly and efficiently. And that turns into profit that you can always count on.

The units are built to last because they feature steel plating, a tubular steel frame and a heavy operating weight. They are equipped with powerful Kubota diesel engines that offer fuel efficient, reliable operation and plenty of horsepower. There's a direct connection between the screen engine and drive pump for a reliable transfer of power, while eliminating service adjustments.

The units are also extremely easy to service, with quick access to all routine maintenance points. And best of all, Thomas Portable Material Handlers offer the best and most comprehensive warranty in the industry: 12-month machine warranty and 3-year Kubota engine warranty.

Three models, endless possibilities

Model 300

1 1/4 cu. yd.
4826 kg (10,640 lbs)
13 kw (17.4 hp)

Model 400

3 cu. yd.
5870 kg (12,940 lbs)
22.5 kw (30 hp)

Model 900

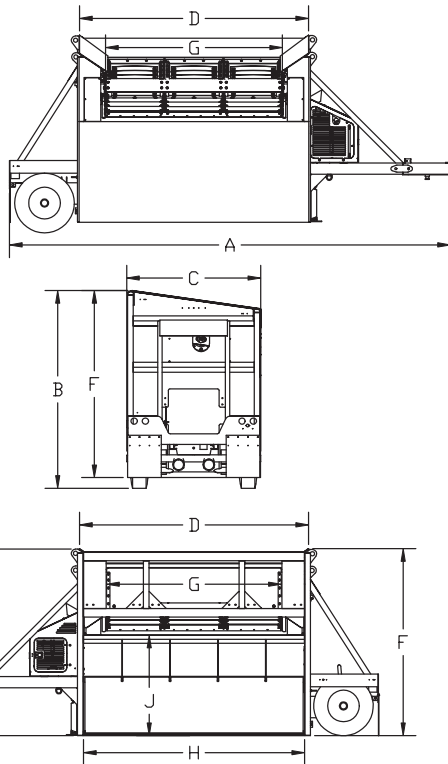
5 cu. yd.
10133 kg (22,340 lbs)
34.3 kw (46 hp)

300400900

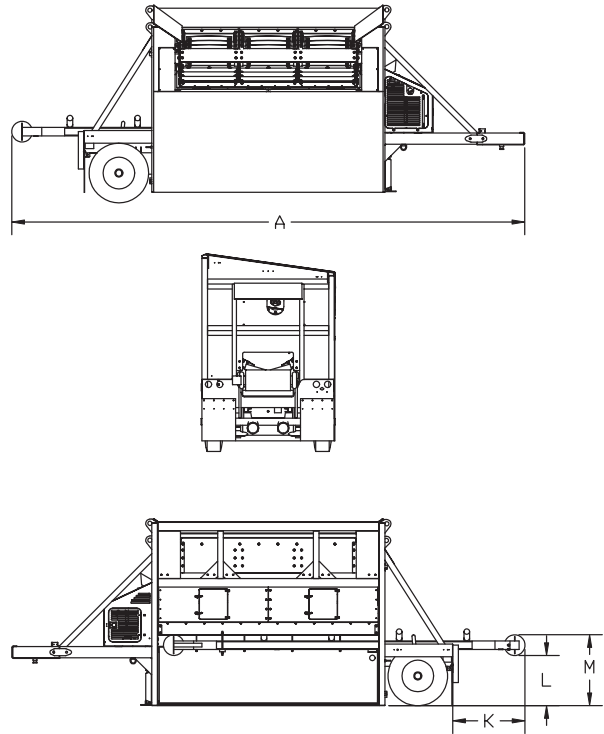
ProTough 900 Product Specifications

PERFORMANCE SPECIFICATIONS

ProTough 900



ProTough 900 CE



MATERIAL CAPACITY

	ProTough 900	ProTough 900 CE
Maximum Single Load.....	5 cubic Yards	5 cubic Yards
Cycle Time, Average	30 seconds	30 seconds
Shaker Head Decks	2	2
Screen Total Area, mm (in.)	3048 x 2082 (120" x 82")	3048 x 2082 (120" x 82")
Screen Type, Top	Side Tension	Side Tension
Screen Type, Bottom	End Tension	End Tension

WEIGHT

	ProTough 900	ProTough 900 CE
Gross, kg. (lbs.)	10133 (22,340)	11431 (25,200)
Tongue, kg. (lbs.)	4100 (9,040)	4463 (9,840)

TOWING

Hitch Type.....	Fifth Wheel King Pin	Fifth Wheel King Pin
Axle Type	Single Axle, Single Wheel	Single Axle, Single Wheel
Axle Rating, kg. (lbs.)	9525 (21,000)	9525 (21,000)
Tire.....	315-80R22.5	315-80R22.5
Tire Pressure, kPa (psi).....	689 (100)	689 (100)
Suspension.....	Air Ride	Air Ride
Brake System	ABS-Pneumatic	ABS-Pneumatic

HYDRAULICS

Pump Type / Brand	Gear / Eaton	Gear / Eaton
Shaker Motor Type / Brand	Piston / Eaton	Piston / Eaton
Control Valve	1 Double Spool	1 Double Spool
Oil Cooler, kJ / m (Btu / m)	448 (425)	448 (425)

ENGINE

	ProTough 900	ProTough 900 CE
Make / Model	Kubota / D2203	Kubota / D2203
Type	Vertical, Water Cooled, 4 Cycle Diesel	Vertical, Water Cooled, 4 Cycle Diesel
Displacement, cc (cu. in.).....	2197 (134.1)	2197 (134.1)
ISO Net Horsepower, kW (hp)	34.3 (46) @ 2800 rpm	34.3 (46) @ 2800 rpm

ELECTRICAL

Battery Type, (BCI Group)	12 Volt	12 Volt
Battery Capacity	730 C.C.A.	730 C.C.A.
Alternator.....	30 Amp	30 Amp

DIMENSIONAL SPECIFICATIONS

A. Overall Length, mm (in.)	7950 (313); 26'-01"	9271 (365); 30'-05"
B. Transport Height (overall), mm (in.).....	3658 (144); 12'-00"	3658 (144); 12'-00"
C. Overall Width, mm (in.)	2413 (95); 7'-11"	2413 (95); 7'-11"
D. Hopper Length, mm (in.)	4116 (162); 13'-6"	4116 (162); 13'-6"
E. Loading Height, mm (in.).....	3327 (131); 10'-11"	3327 (131); 10'-11"
F. Operating Height, mm (in.).....	3378 (133); 11'-01"	3378 (133); 11'-01"
G. Shaker Head Width, mm (in.).....	3353 (132); 11'-00"	3353 (132); 11'-00"
H. Finish Capacity, Bucket Width, mm (in.).....	3962 (156); 13'-00"	3962 (156); 13'-00"
J. Finish Capacity, Bucket Height, mm (in.).....	1981 (78); 6'-06"	Discharge (Feeder) Conveyor
K. Additional Length, Optional Conveyor, mm (in.)		1302 (51) 4'-03"
L. Clearance Under Optional Conveyor, mm (in.).....		905 (35) 2'-09"
M. Optional Conveyor Height, mm (in.).....		1280 (50) 4'-02"

Specifications subject to change without notice

ProTough 300 and 400 Product Specifications

PERFORMANCE SPECIFICATIONS

MATERIAL CAPACITY

	ProTough 300	ProTough 400
Maximum Single Load	1 1/4 cubic Yard	3 cubic Yard
Cycle Time, Average	30 seconds	30 seconds
Shaker Head Decks	2	2
Screen Area, each, mm (in.)	1346 x 2459 (53" x 82")	1803 x 2459 (71" x 82")
Screen Type, Top	Side Tension	Side Tension
Screen Type, Bottom	End Tension	End Tension

WEIGHT

Gross, kg. (lbs.)	4826 (10,640)	5870 (12,940)
Tongue, kg. (lbs.)	1145 (2,525)	1497 (3,300)

TOWING

Hitch Type	Pintle, Height Adjustable	Pintle, Height Adjustable
Axle Type	Single Axle, Dual Wheel	Single Axle, Dual Wheel
Axle Rating, kg. (lbs.)	4545 (10,000)	4545 (10,000)
Tire Pressure, kPa (psi)	551 (80)	551 (80)
Suspension	None	None
Brake System	Electric	Electric

HYDRAULICS

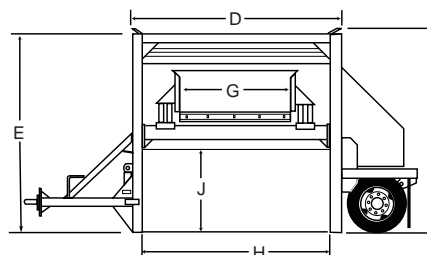
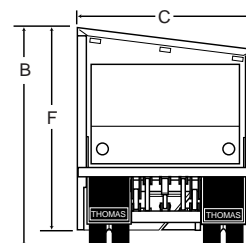
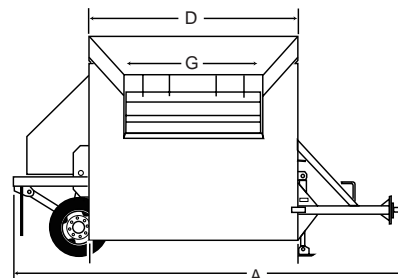
Pump Type / Brand	Gear / Sundstrand	Gear / Sundstrand
Shaker Motor Type / Brand	Gear / Sundstrand	Piston / Sundstrand
Control Valve(s) 2 per machine	1 Double Spool	1 Double Spool
	1 Single Spool	1 Single Spool
Cylinders	2	2
Oil Cooler, kJ / m (Btu / m)	448 (425)	448 (425)

ENGINE

Make / Model	Kubota / D905	Kubota / V1305-B
Type	Vertical, Water Cooled	Vertical, Water Cooled
	4 Cycle Diesel	4 Cycle Diesel
Displacement, cc (cu. in.)	899 (54.8)	1335 (81.5)
ISO Net Horsepower @ 3000 rpm, kW (hp)	13 (17.4)	22.5 (30)
Torque @ 2000 rpm, Nm (lbs./ft)	41 (30.34)	60 (43.4)

ELECTRICAL

Battery Type, (BCI Group)	12 Volt	12 Volt
Battery Capacity	730 C.C.A.	730 C.C.A.
Alternator	30 Amp	30 Amp



DIMENSIONAL SPECIFICATIONS

	ProTough 300	ProTough 400
A. Overall Length, mm (in.)	5791 (228) 19'-00"	6261 (246) 20'-07"
B. Transport Height (overall), mm (in.)	2794 (110) 9'-02"	3251 (128) 10'-08"
C. Overall Width, mm (in.)	2311 (91) 7'-07"	2311 (91) 7'-07"
D. Hopper Length, mm (in.)	2654 (104) 8'-08"	3099 (122) 10'-02"
E. Loading Height, mm (in.)	2489 (98) 8'-02"	3099 (122) 10'-02"
F. Operating Height, mm (in.)	2565 (101) 8'-05"	2946.4 (116) 9'-08"
G. Shaker Head Width, mm (in.)	1372 (54) 4'-06"	1829 (72) 6'-00"
H. Finish Capacity, Bucket Width, mm (in.)	2438 (96) 8'-00"	2896 (114) 9'-06"
J. Finish Capacity, Bucket Height, mm (in.)	1168 (46) 3'-10"	1422 (56) 4'-08"

Specifications subject to change without notice



P.O. Box 510 | 29 Hawkins Road | Centreville, New Brunswick | Canada E7K 3G4

P.O. Box 336 | Mars Hill, Maine | USA 04758

Tel: 506-276-4511 | Fax: 506-276-4308 | www.thomasloaders.com

1-866-BE TOUGH www.thomasloaders.com