

NORSE 290

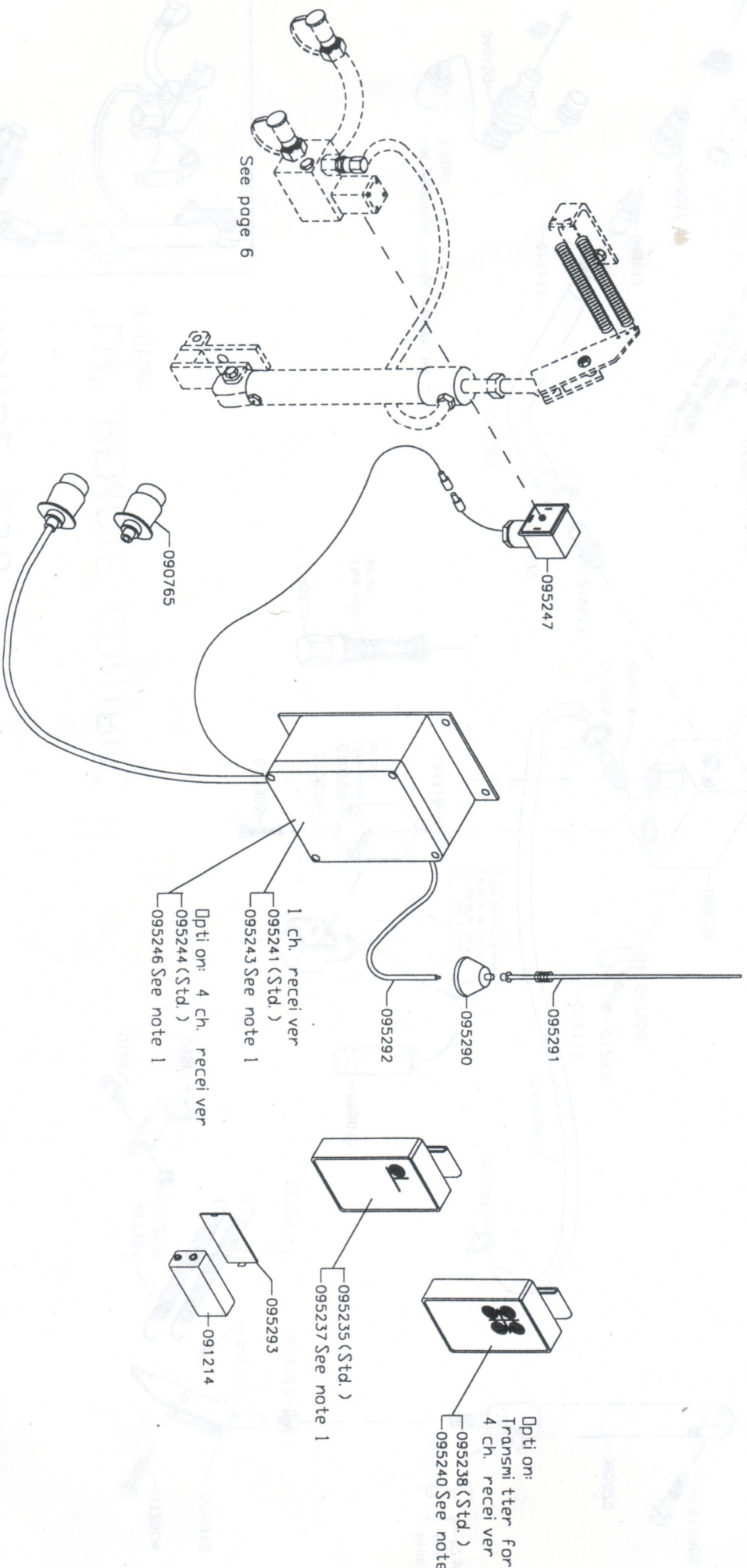
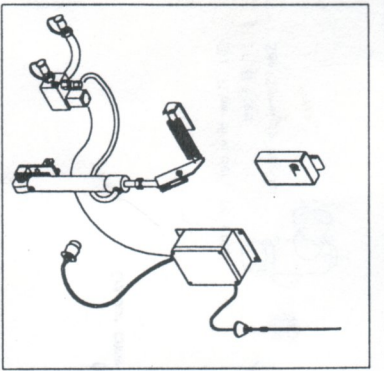
RADIO REMOTE CONTROL KIT: 095230

Additional price for 4 ch. transmitter/receiver — 095231

Add. price for frequency for Great Britain/Slovenia — 091163

(Transmitter, Receiver and Hydraulics)

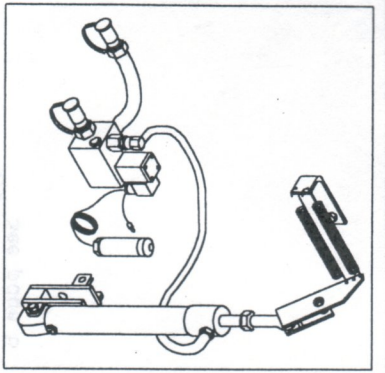
If fitted.



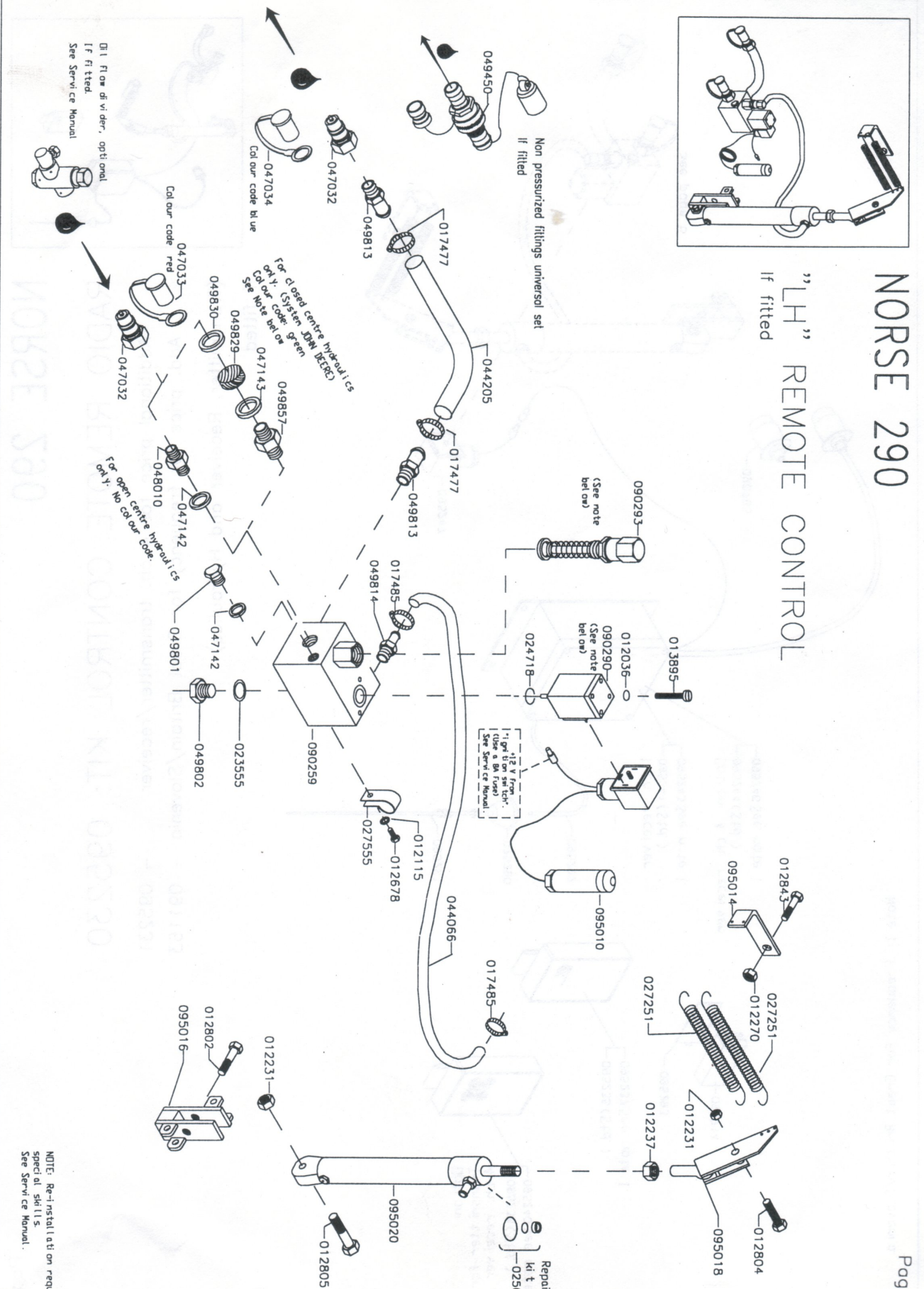
Note 1: Frequency for Great Britain/Slovenia

NORSE 290

"LH" REMOTE CONTROL



If fitted
Non pressurized fittings universal set



12 V fuse
"light on switch"
(Use a BA Fuse)
See Service Manual.

For closed centre hydraulic
ONLY: (System JHM DEFC)
Colour Code: Green
See Note below

For open centre hydraulic
ONLY: No Colour Code

Oil Flow divider, optional
If fitted
See Service Manual

Repair Kit
0250

NOTE: Re-installation requires special skills. See Service Manual.